

# BLOCK HEADS

FIND OUT WHAT THE EXPERTS HAVE TO SAY  
ON MANAGING WHERE YOU LIVE



A series of 3 Saturday morning training seminars for residents in apartment blocks in the Waterfront and city centre who want to improve the management of their building.

Sponsored by



## SESSION ONE Saturday 22nd February 2014. 9.45 – 1.00

Led by Sian Evans, Weightmans LLP. Venue: Weightmans LLP, 100 Old Hall Street, Liverpool L3 9QJ.

### **YOUR BLOCK – challenges to effective management**

Skills for good management; decision-making and consultation procedures; the AGM; conflicts of interest; anti-social neighbours; sub-letting and serviced apartments; conflict resolution and mediation; poorly performing Managing Agents and Management Companies; issues from the night-time economy; First Tier Tribunal Property Chambers.

## SESSION TWO Saturday 15th March 2014. 9.45 – 1.00

Led by Jane Janvier, Hill Dickinson. Venue: Hill Dickinson, No.1 St. Paul's Square, Liverpool L3 9SJ.

### **YOUR BLOCK – structures for good management**

Block management options and legal requirements; residents' rights; mixed-used developments limitations and possibilities; RTM and RMC companies their rights and responsibilities; RICS Code of Practice; forming a Residents Association; developing a communications strategy; democratic, transparent and accountable organisations.

## SESSION THREE Saturday 5th April 2014. 9.45 – 1.00

Led by Alistair Fletcher, Brabners LLP. Venue: Brabners LLP, Horton House, Exchange Flags, Liverpool L2 3YL.

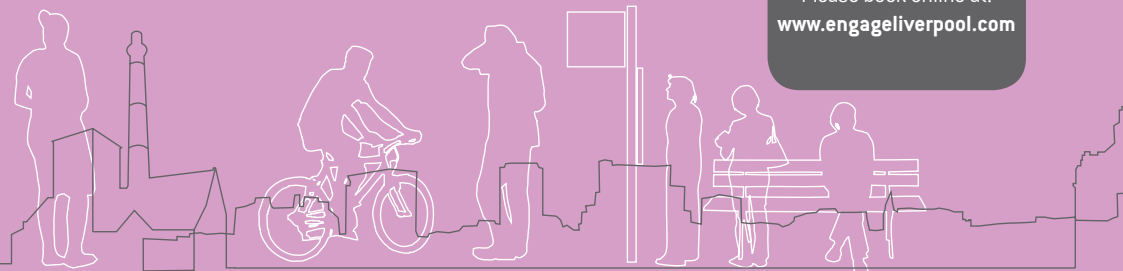
### **YOUR BLOCK – value for money in contracting services**

Choosing the right Managing Agent; getting Value for Money; improving the quality of service provision; the importance of the contract; enforcing the contract; using the RICS Code of Practice; budget setting; service charge arrears; sinking funds; cyclical funds; building insurance; financial accountability.

**Successful completion of the seminar series will lead to an award in RESIDENTIAL BLOCK MANAGEMENT**

**Refreshments will be served.**

Registration is essential as places are limited.  
Please book online at:  
[www.engageLiverpool.com](http://www.engageLiverpool.com)



In partnership with



**Brabners**

HILL DICKINSON

**Weightmans**